

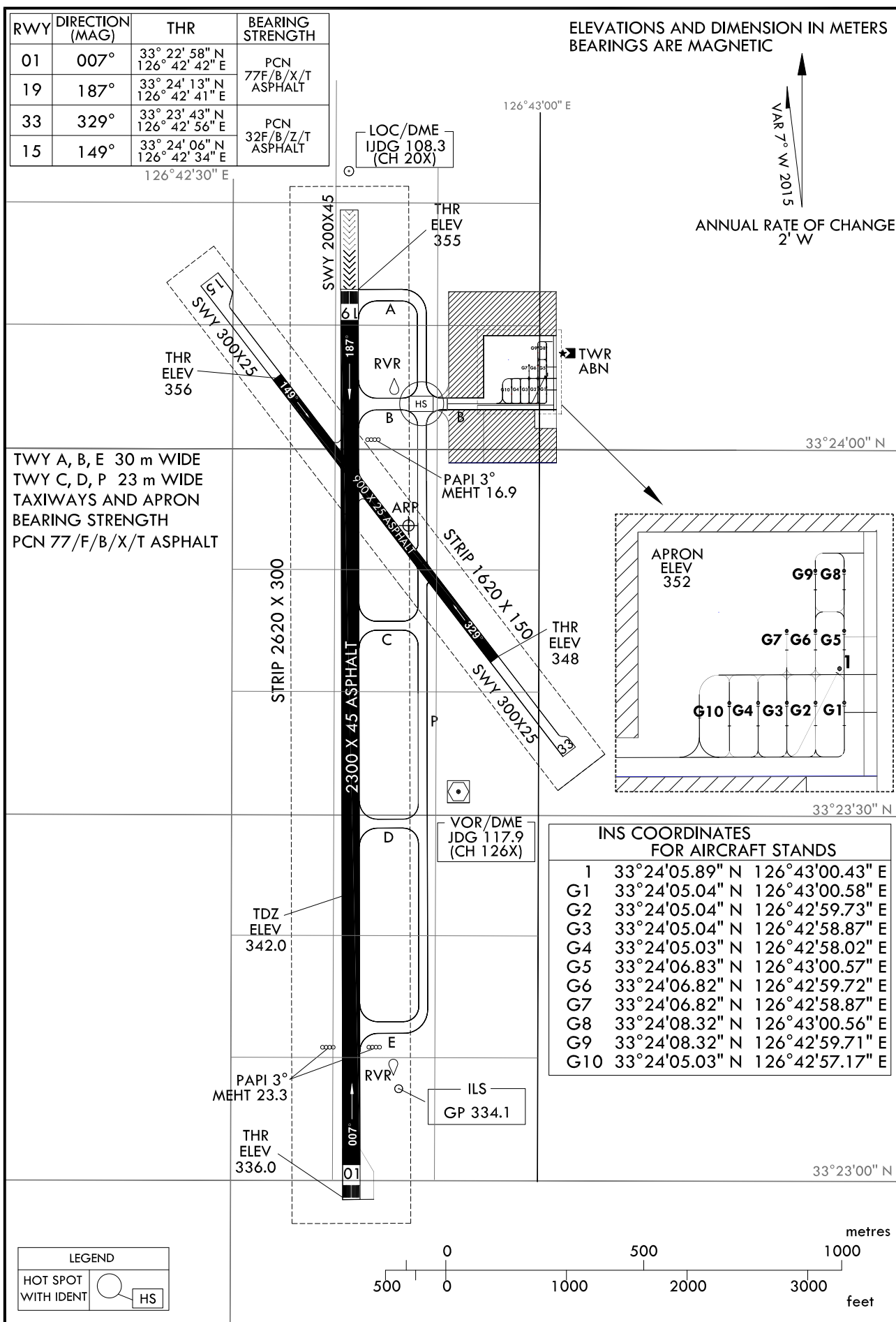
AERODROME CHART - ICAO

33°23'54" N  
126°42'47" E

ELEV 358 m

TWR 124.35  
GND 121.95

JEJU / Jeongseok

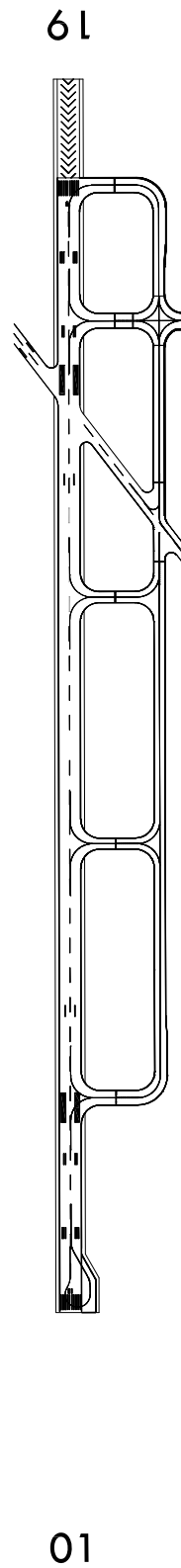


Change : Information of MAG VAR.

LIGHTING AND  
MARKING CHART

JEJU / Jeongseok

MARKING AIDS RWY 01/19 AND EXIT TWY



LIGHTING AIDS RWY 01/19 AND EXIT TWY

